

2011 ISCCW Lake Monitoring Program Findings Overview

Date	Lake Name	Approximate Acreages Monitored	Invasive Species Observed
6/20/2011 & 7/26/2011	Duck Lake	124.3	EWM & Phragmites
6/29/2011	Tamarack Lake	28.8	No
6/30/2011 & 8/16/2011	Thousand Island	179	EWM
7/6/2011 & 10/27/2011	Cisco Lake	85.65	CLP
7/16/2011	Allen Lake	9.6	No
7/18/2011	Little Duck Lake	7.04	No
7/19/2011	Misery Bay - LVD	33.92	Phragmites
8/9/2011	Moon Lake	24.96	No
8/12/2011	Imp Lake	10.88	No
8/15/2011	Dinner Lake	21.12	No
8/29/2011	Big Africa Lake	50.56	No
	Little Africa Lake		
	Record Lake		
8/30/2011	Palmer's Bay - Big Lake	13.57	No
9/1/2011	Rice Bay - LVD	117.76	EWM & Phragmites
9/6/2011	Crooked Lake - First Bay	7.74	No
9/8/2011	Beatons Lake	38.91	No
9/9/2011	Long Lake	27.26	No
9/20/2011	Marion Lake	33.28	No

EWM-Eurasian water milfoil / CLP-Curly leaf pondweed

2011 AIS Location Information by Lake

CISCO LAKE CLP LOCATIONS



CISCO LAKE CLP LOCATION INFORMATION

Site ID	GPS Waypoint Locations		Descriptive Information
	Latitude	Longitude	
CI 005	46.14.9543	89.27.0979	Very Dense CLP, approx. 15 ft x 10 ft
CI 006	46.15.0749	89.27.2121	6 CLP plants, 1-2 ft spacing, no matting
CI 007	46.15.1154	89.27.1541	1 CLP plant
CI 008	46.15.1312	89.27.1597	Dense cluster of CLP 6 ft diameter w/ 10 ft ring of sparse density
CI 009	46.15.1382	89.27.1460	Large bed of CLP, some dense 1-2 ft spacing, 40 ft x 30 ft
CI 010	46.15.0991	89.27.1389	Large bed of CLP, 20 ft x 60 ft, most 1-3 ft spacing but occasionally denser
CI 011	46.15.0515	89.27.1850	1 CLP plant
CI 012	46.15.0011	89.27.1435	5 CLP plants in tight cluster
CI 013	46.14.9631	89.27.1034	Large 20 ft diameter colony of very dense CLP surrounded by another 25 ft of less dense 1-2ft spacing
CI 014	46.14.9666	89.27.0834	Very dense surface mat of CLP, 6 ft diameter
CI 015	46.14.9899	89.27.0736	3 CLP plants, 6-8 ft spacing
CI 016	46.14.9873	89.27.0505	6-8 CLP plants in 15 ft circle, 1-5 ft spacing, large dense column 30 ft north surrounded by 25 ft of sparse density CLP
CI 017	46.14.9313	89.26.9989	Dense 8 ft mat of CLP surrounded by 15 ft of sparse spacing CLP
CI 018	46.14.8657	89.26.9938	1 CLP plant
CI 019	46.14.8316	89.26.6811	6 ft Diameter colony of CLP off Resort Dock
CI 020	46.14.3556	89.26.3321	Dense cluster of CLP 5 ft diameter surrounded by 25 ft of sparse spacing CLP
CI 021	46.14.3887	89.26.3541	Scattered sparse spacing CLP between CI 20 and CI 21
CI 022	46.14.3013	89.26.2910	Extensive CLP bed, medium density, 35 ft diameter
CI 023	46.14.2825	89.26.3007	Large Area of CLP 40 Diameter, 1 ft plant spacing
CI 024	46.13.7626	89.26.4645	Large area of CLP, at least 40 ft diameter, plant spacing less than 1 ft
CI 025	46.13.6767	89.26.2659	CLP bed approx 15 ft diameter with less than 1 ft spacing, surrounding 15 ft 1-3 ft spacing
CI 026	46.13.5793	89.26.0177	Large dense bed of CLP on edge of weed bed and few outliers in deeper water. 1-2 ft spacing outliers and bed with less than 1 ft spacing

DUCK LAKE EWM LOCATION INFORMATION

6-20-2011 & 7-26-2011 Mapping

Site ID	GPS Waypoint Locations		Descriptive Information
	Latitude	Longitude	
DU01	46.190794	89.214164	EWM plant
DU02	46.190523	89.214177	2 EWM plants about 6 ft apart
DU03	46.189542	89.214128	EWM plant, 2.5 ft deep
DU04	46.189362	89.214276	Multiple Plants between DU04 and DU03
DU05	46.187502	89.212918	Robust EWM plants
DU06	46.188653	89.224600	2-3 EWM plants, young and green, very little EWM characteristics
DU07	46.189952	89.220084	1 EWM plant covered in algae
DU08	46.188863	89.218101	1 EWM plant heavily branched
DU09	46.188640	89.218004	2 EWM plants, not very healthy, covered in algae. 6 ft deep
DU10	46.188173	89.217640	1 EWM plant, very young and green
DU11	46.191539	89.216677	1 EWM plant near the surface, 9 ft deep
DU12	46.200647	89.224074	Phragmites, about a twenty by twenty patch
DU13	46.197997	89.226647	1 young EWM plant
DU14	46.197280	89.227137	1 EWM plant, 3 ft deep
DU15	46.196392	89.227838	1 EWM plant, 3 ft deep, healthy and robust
DU16	46.196815	89.227310	2 EWM plants, 4 ft deep
DU17	46.196320	89.227315	2 EWM plants, 6 ft deep
DU18	46.192751	89.225834	1 EWM plant, Jim's Find

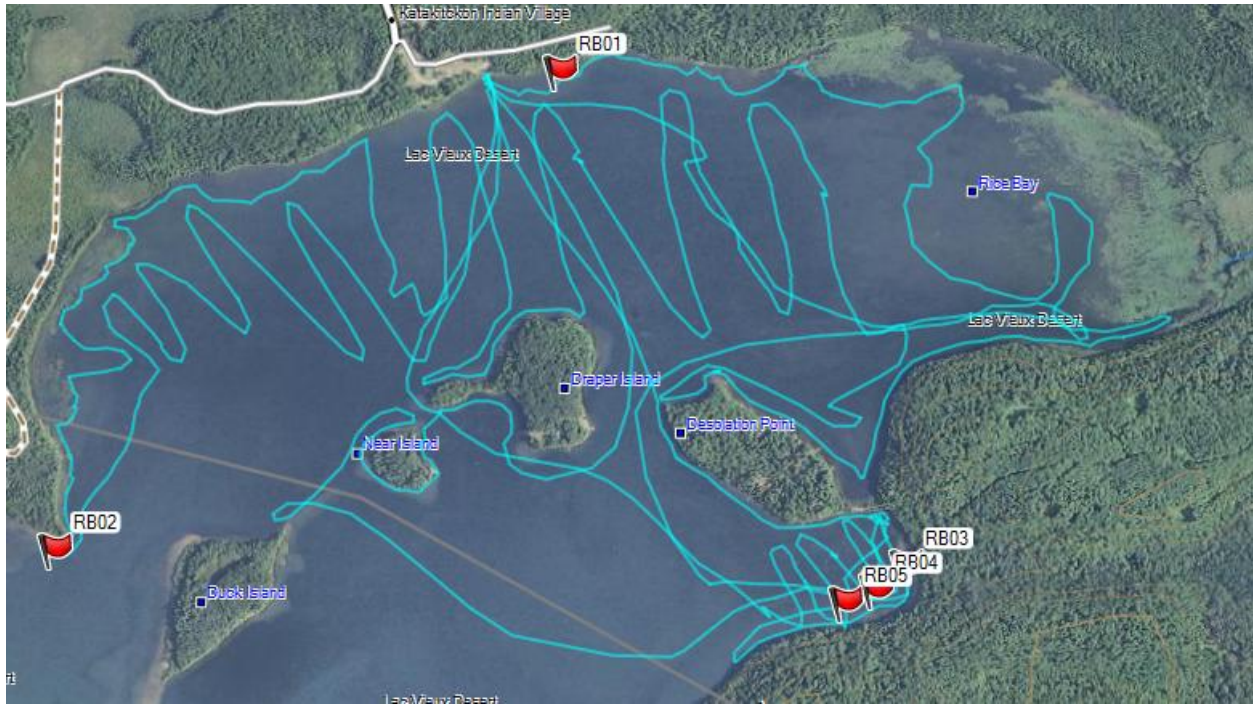
2011 EWM LOCATIONS PROVIDED BY THE DUCK LAKE MILFOIL WATCH

Site ID	GPS Waypoint Locations		Descriptive Information	
	Latitude	Longitude		
1	N46.11377	W089.13493	across from Joe's	4 plants
2	N46.114876	W089.13515	just N of Doug Peterson's garage, 200' off shore	8 plants, 12' circle
3	N46.11545	W089.13586	N end of Doug Peteson's bay, 200' front & N of for sale sign	1 plant
4	N46.11248	W089.12844	B & B bay, front right of beaver house, 70' out	1 plant
5	N46.11285	W089.12890	off Larson's point	1 plant
6	N46.11278	W089.13036	to right of Diethert's dock	1 plant
7	N46.11369	W089.12853	80' N of Max's friends' place, 30'out	4 plants
8	N46.11373	W089.13232	50' W Patch's yard on end of dead log 30' off shore	1 plant
9	N46.11366	W089.13285	100' off shore between Florianos' and Crifaces'	1 plant
10	N 46.11344	W089.13374	40' off shore between Florianos' and Charrafs'	1 plant
11	N46.11765	W089.13654	100' off shore N edge of blow down	1 plant
12	N46.11766	W089.13660	100' off shore N edge of blow down	1 plant
13	N46.11788	W089.13657	80' off shore SE of Wilkies' dock	2 plants
14	N46.11801	W089.13653	40' off shore N corner of Wilkies' dock	3 plants
15	N46.11911	W089.13578	5' water in front of Pytlarz' beach	1 plant
16	N46.11720	W089.13625	120' off shore, S end of blow down	2 plants
17	N46.11718	W089.13633	75' off shore, S end of blow down	3 plants
18	N46.12082	W089.13309	70' off shore, 3' water, in weeds , Kosseff's	1 plant
19	N46.11244	W089.12774	end of Bob & Bob's bay, 50' into lily pads, 200' off house/lawn	6-8 plants
20	N46.11290	W089.12818	edge of pads, 200' W of Bob & Bob's boathouse, 50' out	1 plant
21	N46.12029	W089.13231	E side of island, 50' S of old dock, 7' water	1 plant
22	N46.12018	W089.13243	E of above plant, 7' water	big plant

23	N46.12336		W089.13290	just off reeds, little S of For Sale sign	1 plant
24	N46.12316		W089.13299	150' off place N of Larry's, 15' off reeds	1 plant
25	N46.11363		W089.13433	middle Joe's bay, straight out from Ursula's dock, 8' water	2 plants
26	N46.12281		W089.13321	75' S of dock N of Larry's, 40' out	2 plants
27	N46.11929		W089.13560	70' S of Jeff's building site, 8' apart	2 plants
28	N46.11278		W089.13037	Right of Diethert's dock	1 plant
29	N46.11369		W089.12853	80' N of Max's friends' place, 20' out	1 plant
30	N46.11770		W089.13644	blow down, SE of Wilkie's dock, 40' off pads	1 plant
31	N46.11432		W089.12849	N of Jonathan's dock, 150' N of edge of pads	2 plants
32	N46.11432		W089.12849	near above, 250' N of edge of pads	2 plants
33	N46.11531		W089.13550	For Sale property N of Doug's, 250' out	2 plants
34	N46.11659		W089.13578	8' deep, 100 yds S of blow down	1 plant
35	N46.11355		W089.13303	70' E of my Rex pier	1 plant
36	N46.11365		W089.13297	150' E of my Rex pier	1 big plant
37	N46.11384		W089.13251	200' out NE of Steve's dock	1 plant
38	N46.11383		W089.13228	70' out, W edge Patch's yard, pulled whole plant getting sample	1 plant
39	N46.11392		W089.13218	NW of Patch's dock	1 plant
40	N46.11337		W089.13092	20' off shore by Mary Jo's, 100 yds E of Patch's point	1 plant
41	N46.12192		W089.13368	200' S of Larry's dock, 40' off shore	1 plant
42	N46.11299		W089.13067	50 yds W of Diethert's dock, 20' off shore, edge of pads	1 plant
43	N46.11360		W089.12867	30' off Max's friend's dock	1 plant
44	N46.11698		W089.13296	6 pack pt., 15' off shore	1 plant
45	N46.13484		W089.12933	For Sale sign by Dunbars, 100' out, N end of lake	3 plants
46	N46.11833		W089.13624	100' S of Ghinazzi's, 10' off reeds	1 plant
47	N46.11812		W089.13631	100' N of Wilkie's 30' off shore	1 plant
48	N46.11800		W089.13647	near Wilkie's dock treatment spot	several

49	N46.11555		W089.13545		NE of For Sale Sign	several
50	N46.11320		W089.13471		between LoMasto's and Richards	several
51	N46.11397		W089.13209		N of Patch's dock, 100' out, (couldn't find)	1 plant
52	N46.11334		W089.13087		halfway between Diethert's dock and Patch's point	1 plant
53	N46.11489		W089.12995		halfway between Norgal's dock and dock to the west	1 plant
54	N46.11675		W089.13279		15' apart, 75' E of old dock near Black Bear Pt. , 9'-11'	2 plants
55	N46.11637		W089.13235		2nd dock from Black Bear Pt., 100' SW	1 plant
56	N46.11625		W089.13223		50' SW of above dock, 9'	1 plant
57	N46.11664		W089.13594		150' out, between Doug's bay & blow down	1 plant
58	N46.11601		W089.13592		25' off reeds, N of Doug's bay	1 plant
59	N46.11471		W089.13537		rocks just to edge of Doug's dock, edge of pads	1 plant
60	N46.11400		W089.13203		right in front of Patch's dock, 100' out	1 plant
61	N46.11385		W089.13224		W of Patch's dock on edge of grass line	1 plant
62	N46.11379		W089.13228		W of Patch's dock on edge of grass line	1 plant
63	N46.11952		W089.13526		in front of Pytlarz' new house, 50 ' off pads	1 plant
64	N46.11740		W089.13613		blow down area, 60 ' off pads	1 plant
65	N46.11466		W089.13502		left of Doug's dock, 100' off reeds	1 plant
66	N46.12016		W089.13467		50' off reeds, 200 yds. N of Pytlarz' new house	1 plant

LAC VIEW DESERT-RICE BAY EWM & PHRAGMITES LOCATIONS



LAC VIEW DESERT-RICE BAY EWM & PHRAGMITES LOCATION INFORMATION

Site ID	GPS Waypoint Locations		Descriptive Information
	Latitude	Longitude	
Misery Bay *			
MB01	46.158288	89.121436	Stand of Phragmites, not as healthy or large as 2010
MB02	46.142418	89.111677	Stand of Phragmites
Rice Bay			
RB01	46.150141	89.0852	Small Stand of Phragmites
RB02	46.13687	89.1019	Large Stand of Phragmites
RB03	46.13703	89.07304	1 EWM plant, 1.5 ft deep, sample collected
RB04	46.13634	89.07407	15-20 EWM sprigs, healthy plant, fragmenting
RB05	46.13596	89.07507	1 EWM plant, branched and fragmenting

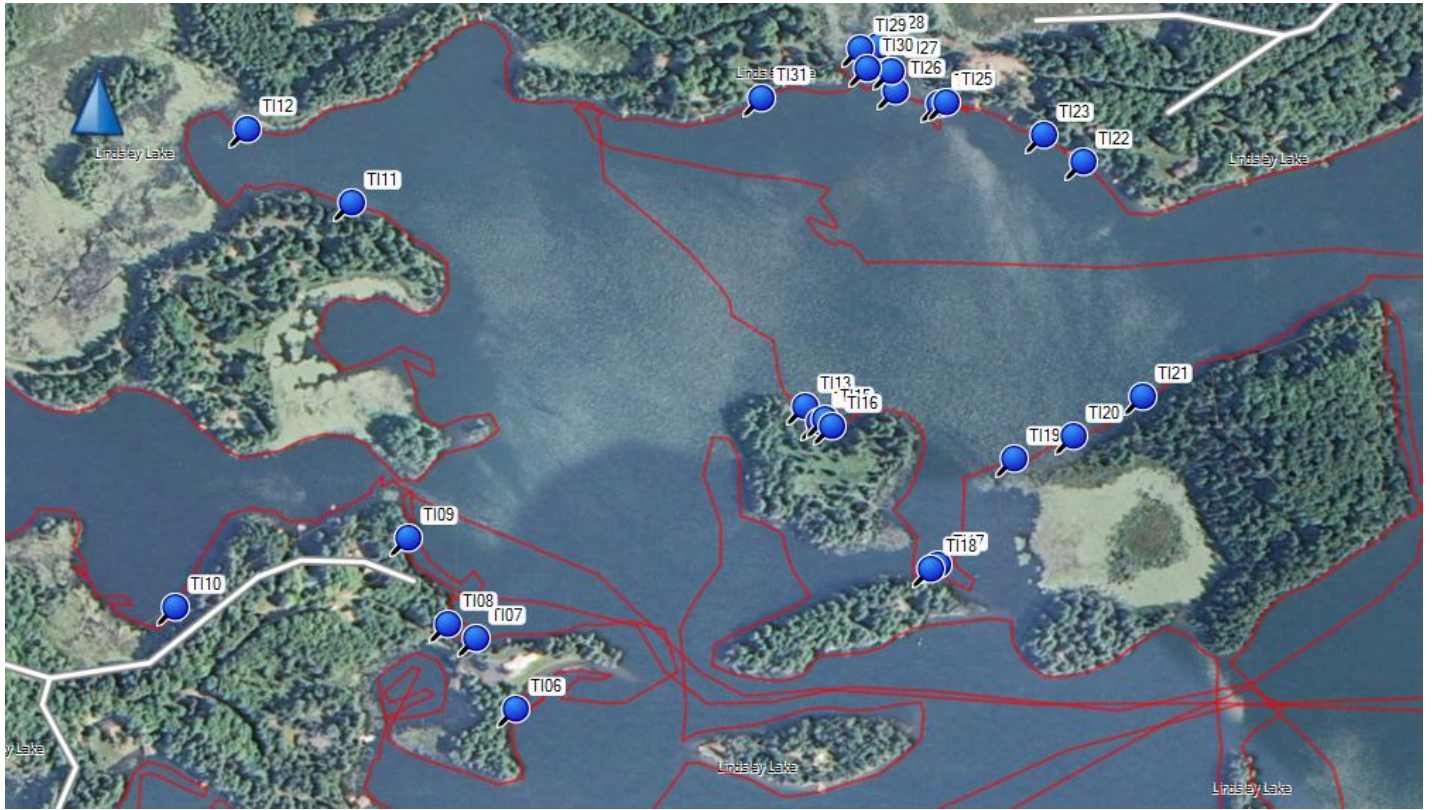
*Not represented on map

THOUSAND ISLAND EWM LOCATION INFORMATION

Lake Overview



North Side



Near boat launch



THOUSAND ISLAND EWM LOCATION INFORMATION

Site ID	GPS Waypoint Locations		Descriptive Information
	Lat	Long	
TI01	46.23077	89.39034	2-3 EWM plants, healthy 6-7 ft deep
TI02	46.23067	89.39062	1 plant, western edge of EWM between TI01, 10-15 plants total
TI06	46.23128	89.4101	1 EWM plant, sample collected
TI07	46.23196	89.41061	1 EWM plant, sample collected 6-7 depth
TI08	46.23209	89.41096	2 EWM plants, 4 ft deep. Plants about 6 ft apart
TI09	46.23291	89.41147	1 EWM plant, 3 ft deep, 18" to right of log
TI10	46.23219	89.41427	1 plant, multi sprigs healthy, developing adventitious roots along stem, 6 ft deep
TI11	46.23614	89.41225	1 EWM plant, multi sprigs, 3 ft deep
TI12	46.23283	89.41354	1 EWM plant, heavily branched and developing adventitious roots along stem, 6-8 ft deep
TI13	46.23428	89.4067	1 EWM plant, healthy and developing adventitious roots along stem, 5-6 ft deep
TI14	46.23414	89.40652	1 EWM plant, healthy and developing adventitious roots along stem, 5-6 ft deep
TI15	46.23416	89.40646	3 very robust EWM plants, multi sprigs and branched, 5-6 ft deep. Next to brush in water
TI16	46.2341	89.40636	2 very healthy EWM plant, 4-5 ft deep
TI17	46.23278	89.40503	1 EWM plant mixed with northern, 5-6 ft deep
TI18	46.23274	89.40512	Cluster of EWM plants, 10-20 sprigs on one plant, multiple satellite plants around cluster. 5-6 ft deep
TI19	46.23383	89.40414	1 EWM plant, 3-4 ft deep
TI20	46.23406	89.40343	1 very healthy EWM plant, multi sprig to surface developing adventitious roots along stem , 3 ft deep
TI21	46.23446	89.4026	1 EWM plant developing adventitious roots along stem, 3-4 ft deep
TI22	46.23672	89.4034	2 EWM plants, 4 ft deep,
TI23	46.23697	89.40388	Multiple EWM plants along log, 3-6 ft deep
TI24	46.23725	89.40517	1 multi sprig EWM plant
TI25	46.23726	89.40508	multiple EWM plants, 4-6 ft deep
TI26	46.23736	89.40569	1 EWM plant, 4 ft deep
TI27	46.23755	89.40576	2 EWM plants amongst old stump, 3 ft deep
TI28	46.23779	89.40592	Multiple EWM plants in a cluster

T129	46.23776	89.40613	1 multi sprig EWM plant, 1 ft deep, north side of log
T130	46.23757	89.40604	2 maybe 3 EWM plants, 4-5 ft deep
T131	46.23726	89.40733	1 heavily branched EWM mixed in branches of deadfall